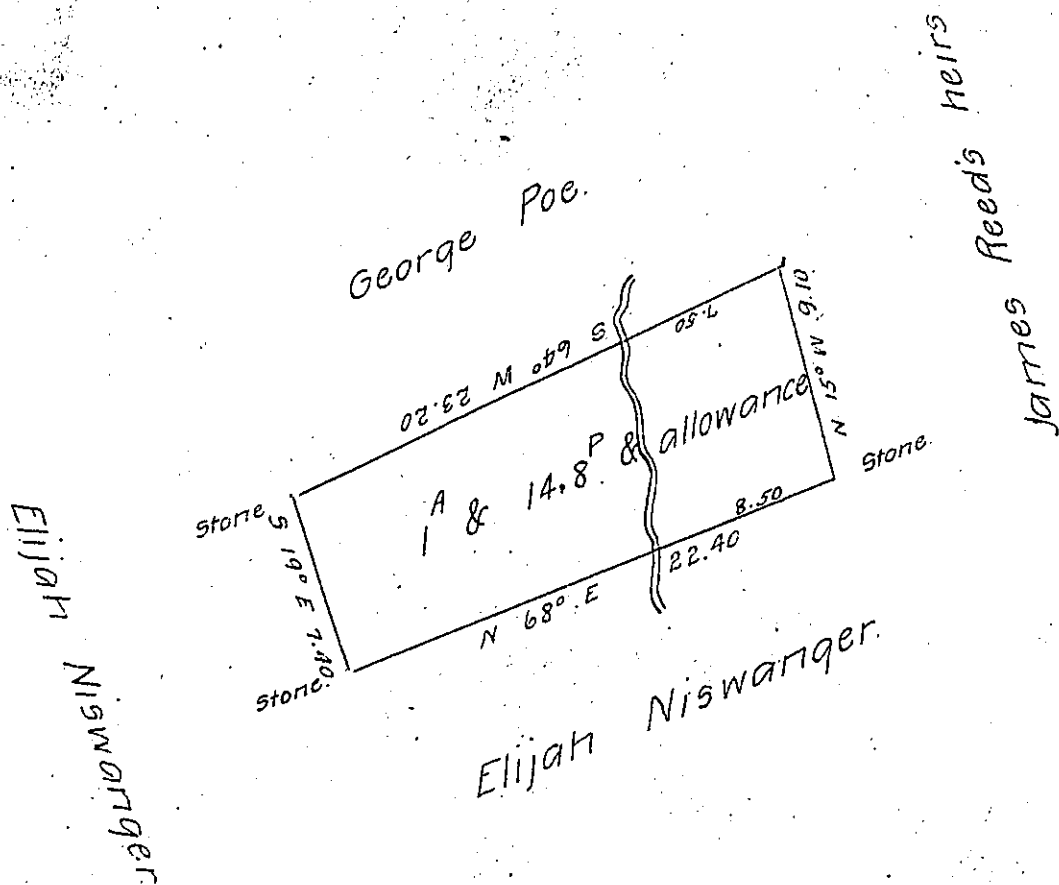


Greene  
BEAVER  
✓



The above is - Draft of a lot of ground situate on the waters of Mill Creek Green township Beaver County Pa. Containing one acre and fourteen and eight tenths Perches and allowance Surveyed Jan. 25<sup>th</sup> 1860 in pursuance of a Warrant granted to Elijah Niswanger for five acres of land dated May 27<sup>th</sup> 1839.

James Harper C. S.

To William H. Keim Esq  
Surveyor General  
Harrisburg Pa.

Beaver County, Pa.

IN TESTIMONY that the above is a copy of the original remaining on file in the Department of Internal Affairs of Pennsylvania, made conformably to an Act of Assembly approved the 16th day of February, 1833, I have hereunto set my Hand and caused the Seal of said Department to be affixed at Harrisburg, this twenty eighth day of May 1906.

*James H. Keim*  
Secretary of Internal Affairs.